



Ship Layout - Industrielicht

Date:1/22/2021
Specialist: David Mackey
dmackey@phoenixlighting.com

Table of Contents

Project Summary.....3-5
Plan View.....6-8
Various Exterior Views.....9-14
Various Interior Views.....15-22

Ship Layout - Industrielicht
David Mackey
Lighting Application Specialist
(414) 973-3337
dmackey@phoenixlighting.com









Phoenix Products LLC.

The recipient agrees and confirms that they will use the information supplied by Phoenix Products company, Inc. to prepare lighting layouts and/or evaluate lighting for recommendation or specification, and while they may share layouts with clients, they will not otherwise distribute or share outside of the company the files or information contained therein.

Illumination results shown on this lighting design are based on project parameters provided to Phoenix Products used in conjunction with luminaire test procedures conducted under laboratory conditions. Actual project conditions differing from these design parameters may affect field results. The customer is responsible for verifying compliance with any applicable electrical, lighting, or energy code.

PHOENIX[®]
DURABILITY X DESIGN™
A division of The Phoenix Company™

Luminaire Schedule

Symbol	Qty	Label	Description	Arrangement	Lumens/Lamp	LLF
	14	MC2-MAX-MF	MC2-MAX-MF or EM2-42	SINGLE	N.A.	0.850
	10	CL-13-LED	CL-13-LED	SINGLE	N.A.	1.000
	10	CLW-13LED	CLW-13LED	SINGLE	N.A.	0.850
	5	CL-13-LED (RED)	CL-13-LED (RED)	SINGLE	N.A.	0.850
	37	HDL-3-UNIV	HDL-3-UNIV	SINGLE	N.A.	0.850
	24	HDL-2-UNIV	HDL-2-UNIV	SINGLE	N.A.	0.850
	1	MC2-LO-MF	MC2-LO-MF	SINGLE	N.A.	0.850
	3	HDL-1-UNIV	HDL-1-UNIV	SINGLE	N.A.	0.850

Numeric Summary

Label	CalcType	Units	Avg	Max	Min	Avg/Min	Max/Min
Bay Room_Floor	Illuminance	Lux	202.57	287.4	93.3	2.17	3.08
Bow Port Space_Floor	Illuminance	Lux	46.69	94.0	15.8	2.96	5.95
Bow SRBD Space_Floor	Illuminance	Lux	44.63	90.2	16.0	2.79	5.64
Deck_Top_1	Illuminance	Lux	107.42	668.4	4.4	24.41	151.91
ECR_Floor	Illuminance	Lux	213.07	307.2	95.3	2.24	3.22
Engine Room	Illuminance	Lux	150.52	256.5	0.5	301.04	513.00
Hallway_Floor	Illuminance	Lux	174.00	199.2	149.5	1.16	1.33
Hull Room_Floor	Illuminance	Lux	179.11	340.1	21.1	8.49	16.12
Office_Floor	Illuminance	Lux	113.62	240.0	43.3	2.62	5.54
Pump Hull Room_Floor	Illuminance	Lux	237.75	319.5	173.4	1.37	1.84
Stair Room Hull_Floor	Illuminance	Lux	?	?	?	?	?
Stern_Top	Illuminance	Lux	161.92	704.7	15.7	10.31	44.89
Transformer Room_Floor	Illuminance	Lux	156.55	220.7	99.5	1.57	2.22
Water_Water	Illuminance	Lux	24.63	231.1	1.8	13.68	128.39
Wheelhouse_Floor	Illuminance	Lux	8.54	15.2	5.6	1.53	2.71

Ship Layout - Industrielicht
 David Mackey
 Lighting Application Specialist
 (414) 973-3337
 dmackey@phoenixlighting.com

Phoenix Products LLC.

The recipient agrees and confirms that they will use the information supplied by Phoenix Products company, Inc. to prepare lighting layouts and/or evaluate lighting for recommendation or specification, and while they may share layouts with clients, they will not otherwise distribute or share outside of the company the files or information contained therein.

Illumination results shown on this lighting design are based on project parameters provided to Phoenix Products used in conjunction with luminaire test procedures conducted under laboratory conditions. Actual project conditions differing from these design parameters may affect field results. The customer is responsible for verifying compliance with any applicable electrical, lighting, or energy code.

PHOENIX[®]
 DURABILITY X DESIGN™
 A division of The Phoenix Company™

Luminaire Location Summary

LumNo	Label	X	Y	Z	Orient	Tilt
1	MC2-MAX-MF	81.245	22.704	5.759	0	60
2	CL-13-LED	45.941	7.243	0.595	0	0
3	CL-13-LED	55.28	7.29	0.595	0	0
4	CLW-13LED	12.788	5.929	1.954	90	0
5	CLW-13LED	23.161	5.929	1.954	90	0
6	CLW-13LED	2.801	5.029	1.954	120	0
7	CL-13-LED	-19.212	4.732	0.595	0	0
8	HDL-3-UNIV	5.862	4.935	5.922	0	0
9	CL-13-LED	-6.291	4.659	0.595	0	0
10	HDL-3-UNIV	10.957	4.788	0.045	0	0
11	HDL-2-UNIV	35.587	5.023	0.045	0	0
12	HDL-3-UNIV	18.529	4.788	0.045	0	0
13	HDL-3-UNIV	15.045	4.713	5.922	0	0
14	HDL-3-UNIV	22.664	4.788	0.045	0	0
15	HDL-2-UNIV	24.668	4.788	0.045	0	0
16	HDL-2-UNIV	44.033	5.023	0.045	0	0
17	HDL-3-UNIV	21.727	4.725	2.806	0	0
18	HDL-2-UNIV	23.755	4.747	5.907	0	0
19	HDL-3-UNIV	24.855	4.725	2.806	0	0
20	HDL-3-UNIV	27.237	4.725	2.806	0	0
21	HDL-2-UNIV	53.812	5.023	0.045	0	0
22	MC2-MAX-MF	0.973	4.033	6.2	180	60
23	MC2-MAX-MF	24.935	4.28	9.499	90	60
24	HDL-3-UNIV	17.675	4.034	5.922	0	0
25	MC2-MAX-MF	20.421	4.033	9.499	180	60
26	MC2-MAX-MF	25.787	4.033	9.499	0	60
27	CLW-13LED	28.515	4.001	1.954	0	0
28	HDL-3-UNIV	8.565	3.734	5.922	0	0
29	HDL-1-UNIV	31.566	3.96	2.641	90	0
30	CL-13-LED (RED)	22.235	3.39	8.829	0	0
31	CL-13-LED (RED)	25.15	3.39	8.829	0	0
32	HDL-2-UNIV	27.743	3.412	0.045	0	0
33	HDL-2-UNIV	33.945	3.412	0.045	0	0
34	HDL-3-UNIV	9.213	2.981	0.045	0	0
35	HDL-2-UNIV	21.353	3.065	5.907	0	0
36	CL-13-LED	-30.091	2.204	0.595	0	0

Luminaire Location Summary

LumNo	Label	X	Y	Z	Orient	Tilt
37	HDL-2-UNIV	23.555	2.505	5.907	0	0
38	HDL-3-UNIV	21.727	2.224	2.806	0	0
39	HDL-3-UNIV	24.855	2.224	2.806	0	0
40	HDL-3-UNIV	27.237	2.224	2.806	0	0
41	HDL-3-UNIV	9.817	1.732	5.922	0	0
42	HDL-3-UNIV	17.675	1.732	5.922	0	0
43	HDL-3-UNIV	11.752	1.53	0.045	0	0
44	HDL-3-UNIV	16.98	1.53	0.045	0	0
45	HDL-3-UNIV	21.115	1.53	0.045	0	0
46	HDL-3-UNIV	14.762	1.434	5.922	0	0
47	HDL-3-UNIV	27.59	1.421	0.045	0	0
48	HDL-3-UNIV	33.792	1.421	0.045	0	0
49	HDL-2-UNIV	23.635	0.783	5.907	0	0
50	MC2-MAX-MF	61.322	1.241	4.96	270	30
51	HDL-2-UNIV	21.793	0.743	5.907	0	0
52	CL-13-LED (RED)	21.978	0.539	8.829	0	0
53	HDL-2-UNIV	24.738	0.411	2.838	0	0
54	CLW-13LED	0.823	0.032	1.954	180	0
55	MC2-MAX-MF	-24.966	-0.375	4.002	0	60
56	HDL-1-UNIV	20.171	-0.238	5.603	0	0
57	HDL-1-UNIV	20.171	-0.238	2.792	0	0
58	HDL-3-UNIV	11.752	-1.254	0.045	0	0
59	HDL-3-UNIV	16.98	-1.254	0.045	0	0
60	HDL-3-UNIV	21.115	-1.254	0.045	0	0
61	HDL-3-UNIV	27.59	-1.254	0.045	0	0
62	HDL-3-UNIV	9.817	-1.522	5.922	0	0
63	HDL-3-UNIV	33.792	-1.254	0.045	0	0
64	HDL-3-UNIV	14.955	-1.522	5.922	0	0
65	HDL-3-UNIV	17.675	-1.522	5.922	0	0
66	HDL-2-UNIV	22.456	-1.512	2.838	0	0
67	CL-13-LED	-30.091	-2.262	0.595	0	0
68	HDL-2-UNIV	22.714	-1.7	5.907	0	0
69	CLW-13LED	25.174	-1.776	4.864	0	0
70	HDL-3-UNIV	3.009	-2.373	5.922	0	0
71	HDL-2-UNIV	24.738	-2.513	2.838	0	0
72	HDL-2-UNIV	22.834	-2.741	5.907	0	0

Ship Layout - Industrielicht
 David Mackey
 Lighting Application Specialist
 (414) 973-3337
 dmackey@phoenixlighting.com

Phoenix Products LLC.

The recipient agrees and confirms that they will use the information supplied by Phoenix Products company, Inc. to prepare lighting layouts and/or evaluate lighting for recommendation or specification, and while they may share layouts with clients, they will not otherwise distribute or share outside of the company the files or information contained therein.

Illumination results shown on this lighting design are based on project parameters provided to Phoenix Products used in conjunction with luminaire test procedures conducted under laboratory conditions. Actual project conditions differing from these design parameters may affect field results. The customer is responsible for verifying compliance with any applicable electrical, lighting, or energy code.



Luminaire Location Summary

LumNo	Label	X	Y	Z	Orient	Tilt
73	MC2-MAX-MF	60.677	-2.282	8.539	180	60
74	MC2-MAX-MF	61.949	-2.282	8.539	0	60
75	HDL-2-UNIV	24.596	-2.781	5.907	0	0
76	CL-13-LED (RED)	21.434	-2.953	8.829	0	0
77	CL-13-LED (RED)	25.15	-3.242	8.829	0	0
78	MC2-MAX-MF	0.973	-3.9	6.2	180	60
79	CLW-13LED	28.515	-3.667	1.954	0	0
80	MC2-MAX-MF	20.421	-3.9	9.499	180	60
81	MC2-MAX-MF	25.787	-3.9	9.499	0	60
82	HDL-3-UNIV	9.817	-4.124	5.922	0	0
83	HDL-3-UNIV	15.104	-4.124	5.922	0	0
84	HDL-2-UNIV	25.028	-4.026	2.838	0	0
85	HDL-3-UNIV	17.675	-4.124	5.922	0	0
86	HDL-2-UNIV	26.487	-4.026	2.838	0	0
87	MC2-MAX-MF	24.935	-4.241	9.476	270	60
88	HDL-2-UNIV	22.496	-4.275	2.838	0	0
89	CL-13-LED	-19.212	-5.156	0.595	0	0
90	CL-13-LED	-6.291	-5.083	0.595	0	0
91	CLW-13LED	2.801	-5.079	1.954	240	0
92	HDL-3-UNIV	10.957	-5.072	0.045	0	0
93	HDL-3-UNIV	17.928	-5.072	0.045	0	0
94	HDL-3-UNIV	22.063	-5.072	0.045	0	0
95	HDL-2-UNIV	24.668	-5.072	0.045	0	0
96	HDL-2-UNIV	35.587	-5.148	0.045	0	0
97	HDL-2-UNIV	44.033	-5.148	0.045	0	0
98	HDL-2-UNIV	53.812	-5.148	0.045	0	0
99	CLW-13LED	12.788	-5.979	1.954	270	0
100	MC2-LO-MF	24.889	-5.861	4.595	0	35
101	CLW-13LED	22.969	-5.979	1.954	270	0
102	CL-13-LED	45.941	-7.386	0.595	270	0
103	CL-13-LED	55.28	-7.433	0.595	270	0
104	MC2-MAX-MF	81.245	-22.572	5.759	0	60

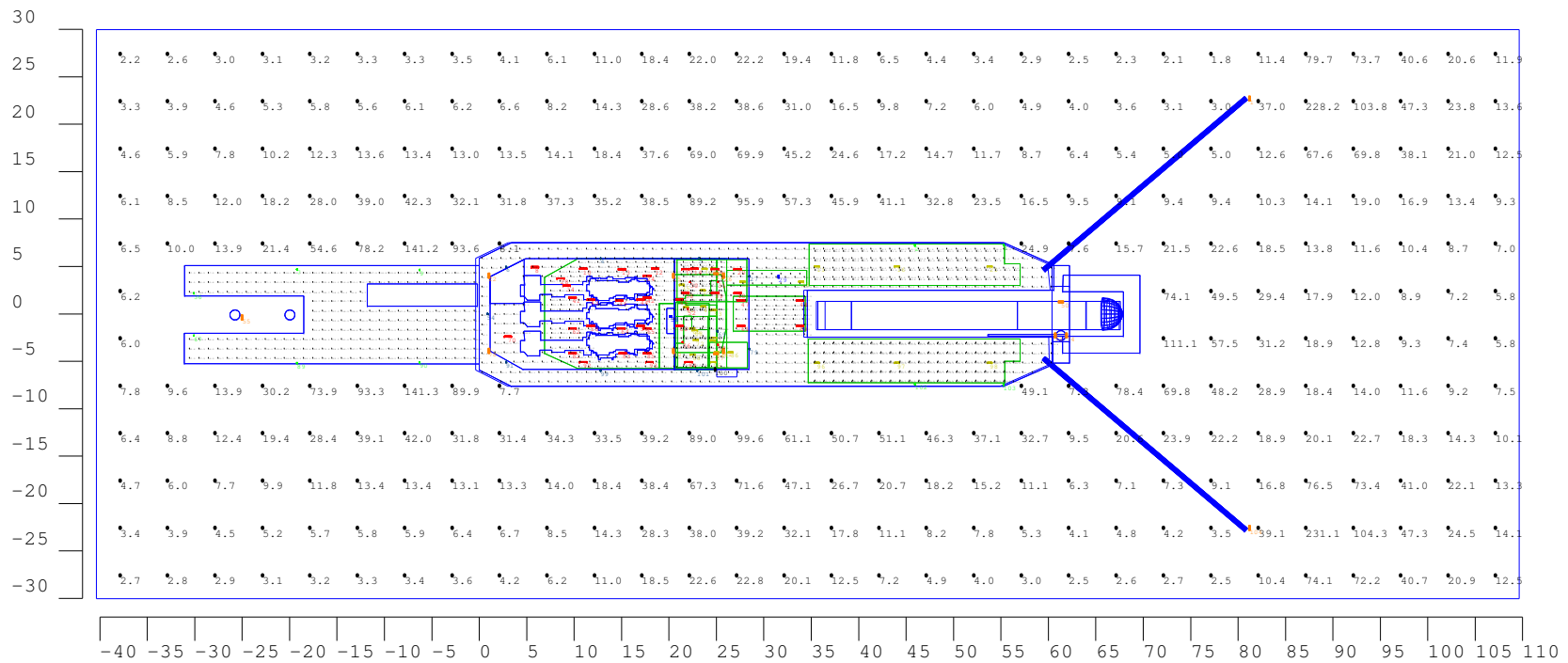
Ship Layout - Industrielicht
 David Mackey
 Lighting Application Specialist
 (414) 973-3337
 dmackey@phoenixlighting.com

Phoenix Products LLC.

The recipient agrees and confirms that they will use the information supplied by Phoenix Products company, Inc. to prepare lighting layouts and/or evaluate lighting for recommendation or specification, and while they may share layouts with clients, they will not otherwise distribute or share outside of the company the files or information contained therein.

Illumination results shown on this lighting design are based on project parameters provided to Phoenix Products used in conjunction with luminaire test procedures conducted under laboratory conditions. Actual project conditions differing from these design parameters may affect field results. The customer is responsible for verifying compliance with any applicable electrical, lighting, or energy code.





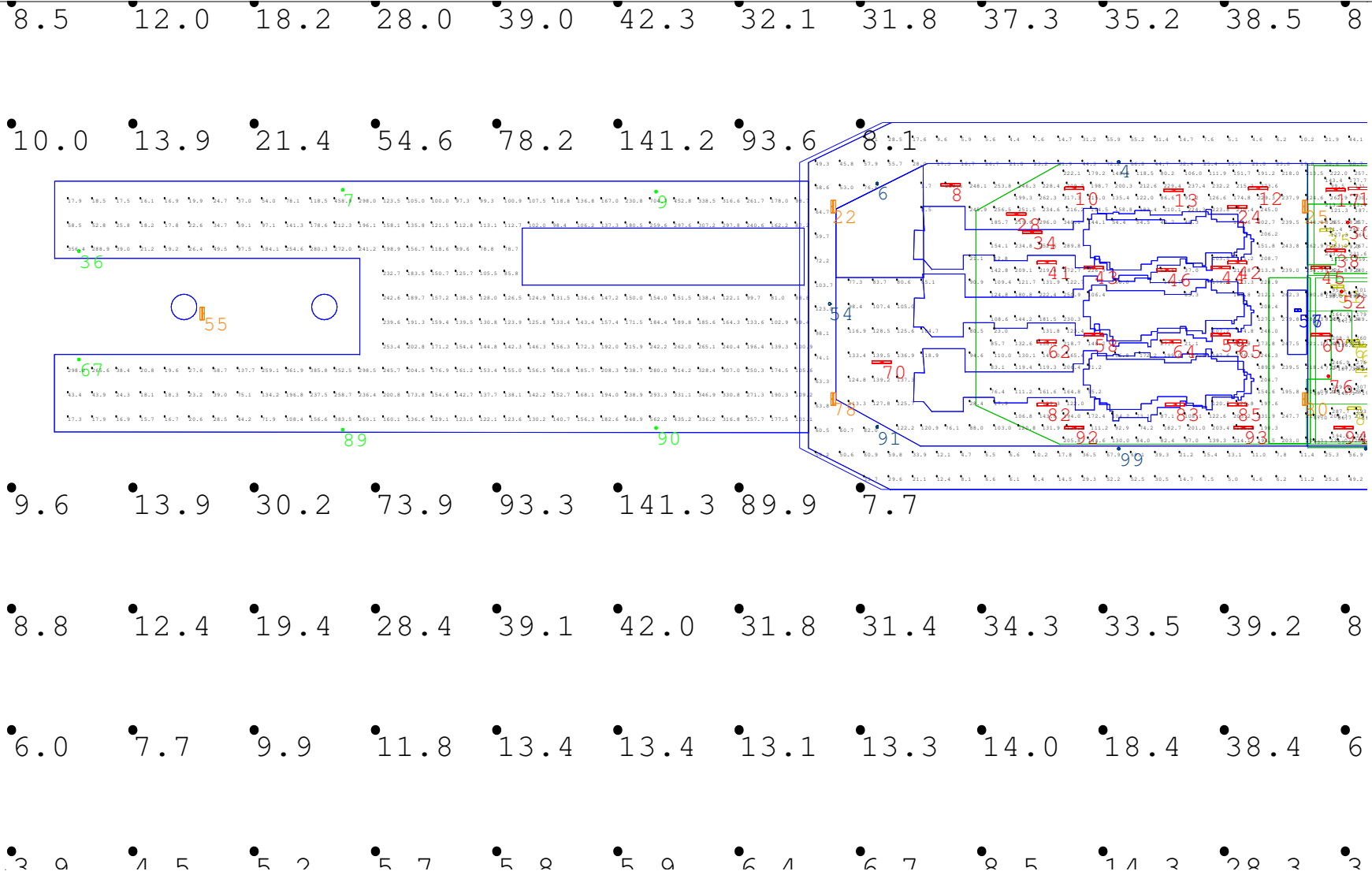
Ship Layout - Industrielicht
 David Mackey
 Lighting Application Specialist
 (414) 973-3337
 dmackey@phoenixlighting.com

Phoenix Products LLC.

The recipient agrees and confirms that they will use the information supplied by Phoenix Products company, Inc. to prepare lighting layouts and/or evaluate lighting for recommendation or specification, and while they may share layouts with clients, they will not otherwise distribute or share outside of the company the files or information contained therein.

Illumination results shown on this lighting design are based on project parameters provided to Phoenix Products used in conjunction with luminaire test procedures conducted under laboratory conditions. Actual project conditions differing from these design parameters may affect field results. The customer is responsible for verifying compliance with any applicable electrical, lighting, or energy code.

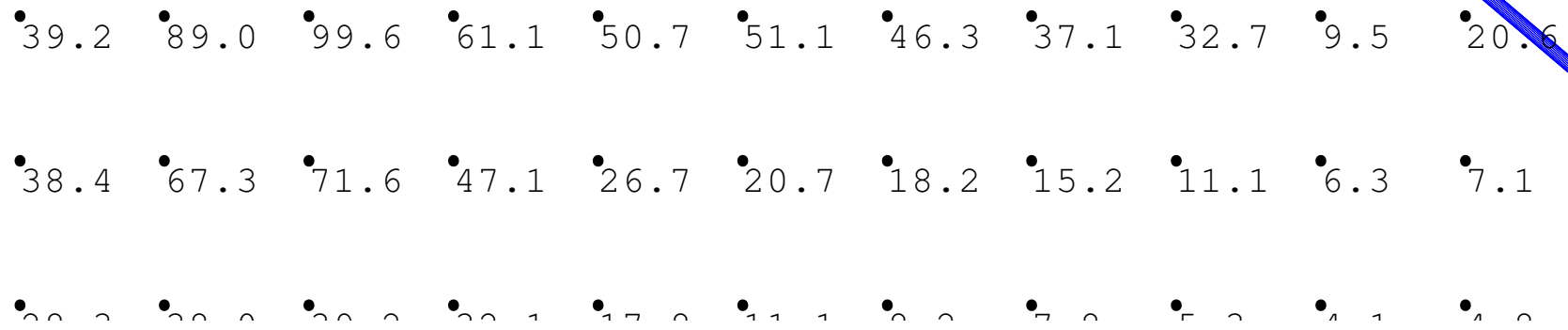
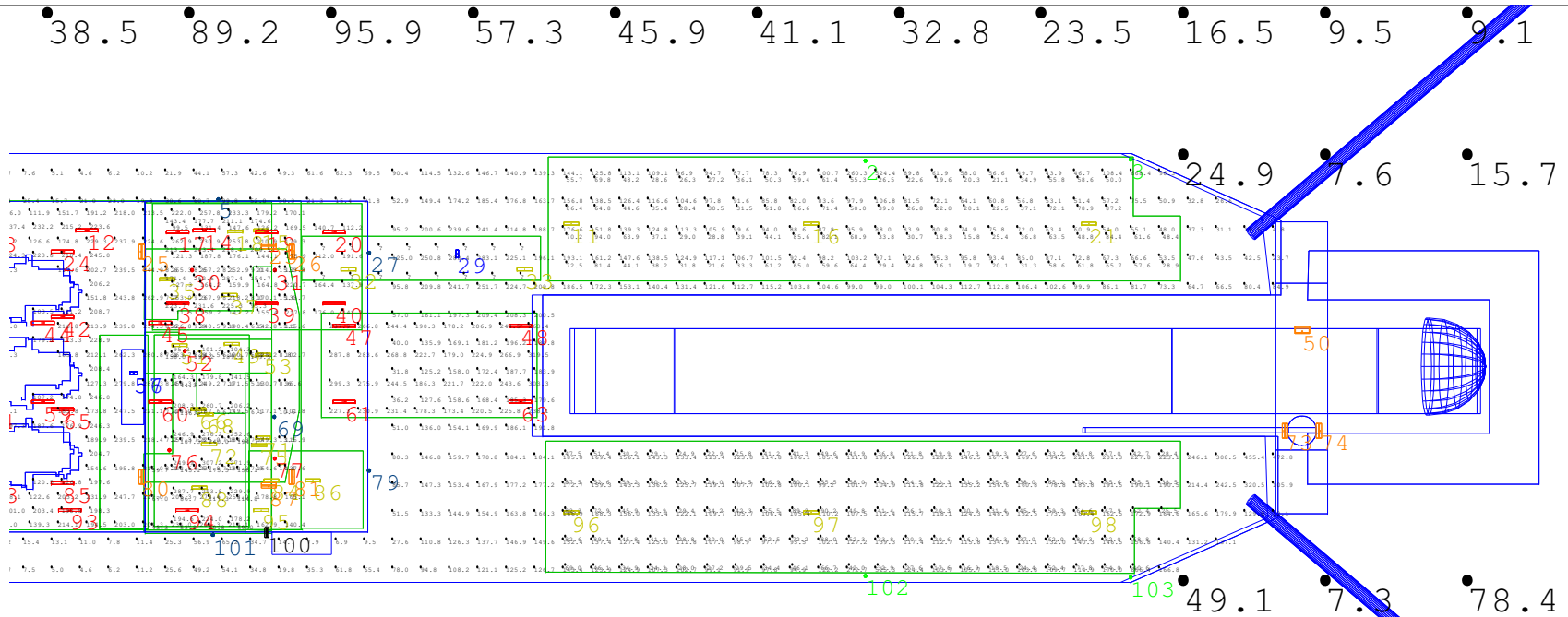




Ship Layout - Industrielicht
 David Mackey
 Lighting Application Specialist
 (414) 973-3337
 dmackey@phoenixlighting.com

Phoenix Products LLC.
The recipient agrees and confirms that they will use the information supplied by Phoenix Products company, Inc. to prepare lighting layouts and/or evaluate lighting for recommendation or specification, and while they may share layouts with clients, they will not otherwise distribute or share outside of the company the files or information contained therein.
Illumination results shown on this lighting design are based on project parameters provided to Phoenix Products used in conjunction with luminaire test procedures conducted under laboratory conditions. Actual project conditions differing from these design parameters may affect field results. The customer is responsible for verifying compliance with any applicable electrical, lighting, or energy code.

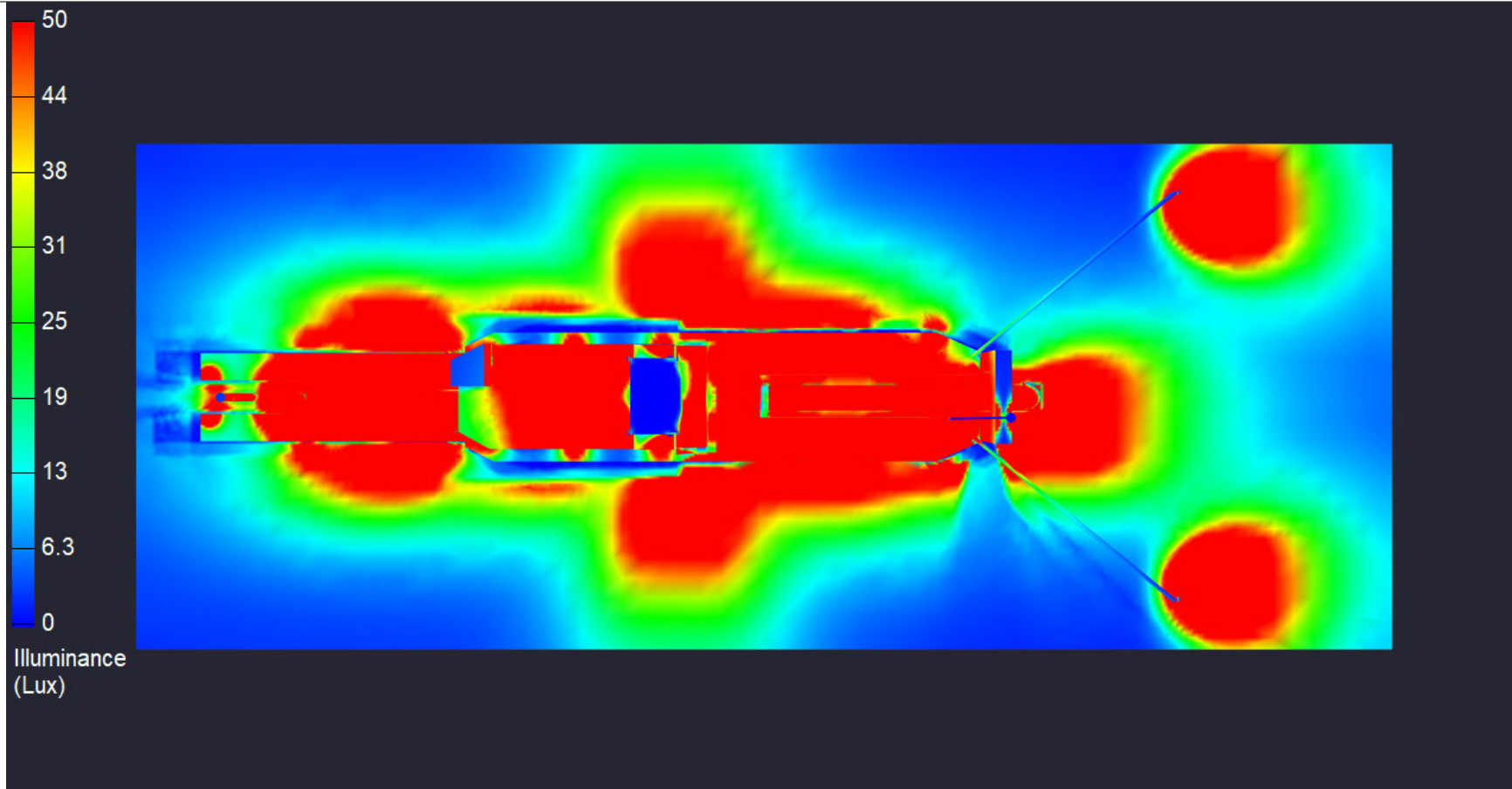




Ship Layout - Industrielicht
 David Mackey
 Lighting Application Specialist
 (414) 973-3337
 dmackey@phoenixlighting.com

Phoenix Products LLC.
The recipient agrees and confirms that they will use the information supplied by Phoenix Products company, Inc. to prepare lighting layouts and/or evaluate lighting for recommendation or specification, and while they may share layouts with clients, they will not otherwise distribute or share outside of the company the files or information contained therein.
Illumination results shown on this lighting design are based on project parameters provided to Phoenix Products used in conjunction with luminaire test procedures conducted under laboratory conditions. Actual project conditions differing from these design parameters may affect field results. The customer is responsible for verifying compliance with any applicable electrical, lighting, or energy code.





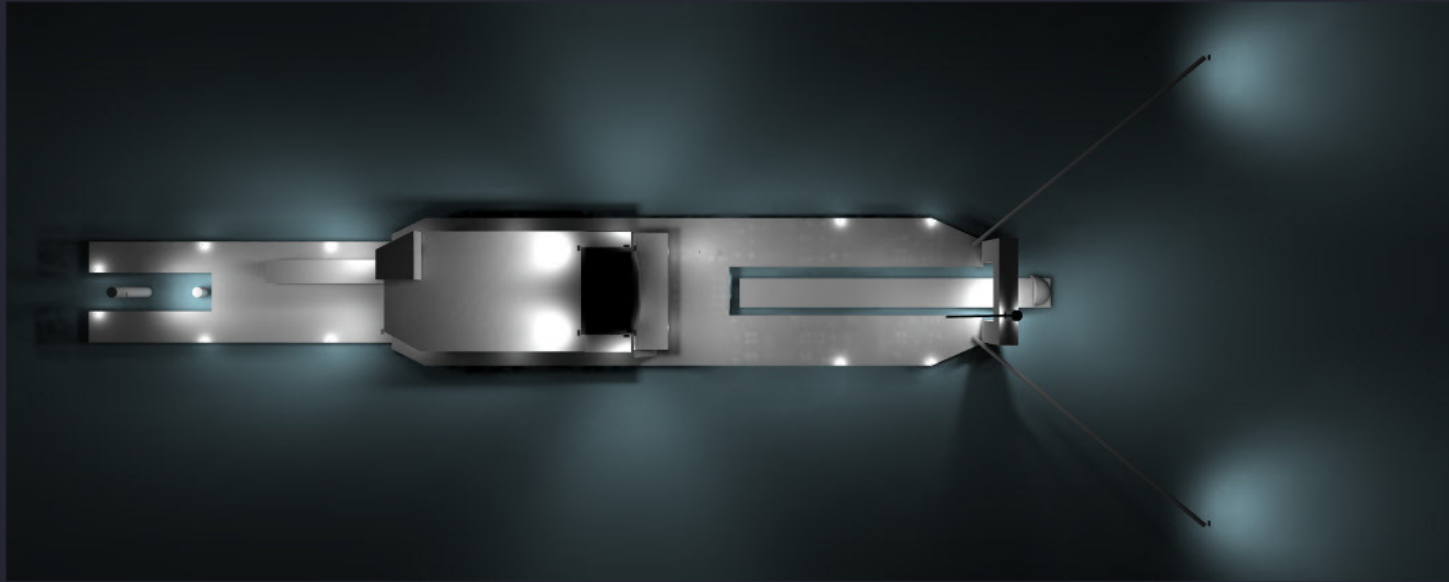
Ship Layout - Industrielicht
David Mackey
Lighting Application Specialist
(414) 973-3337
dmackey@phoenixlighting.com

Phoenix Products LLC.

The recipient agrees and confirms that they will use the information supplied by Phoenix Products company, Inc. to prepare lighting layouts and/or evaluate lighting for recommendation or specification, and while they may share layouts with clients, they will not otherwise distribute or share outside of the company the files or information contained therein.

Illumination results shown on this lighting design are based on project parameters provided to Phoenix Products used in conjunction with luminaire test procedures conducted under laboratory conditions. Actual project conditions differing from these design parameters may affect field results. The customer is responsible for verifying compliance with any applicable electrical, lighting, or energy code.

PHOENIX[®]
DURABILITY X DESIGN™
A division of The Phoenix Company™



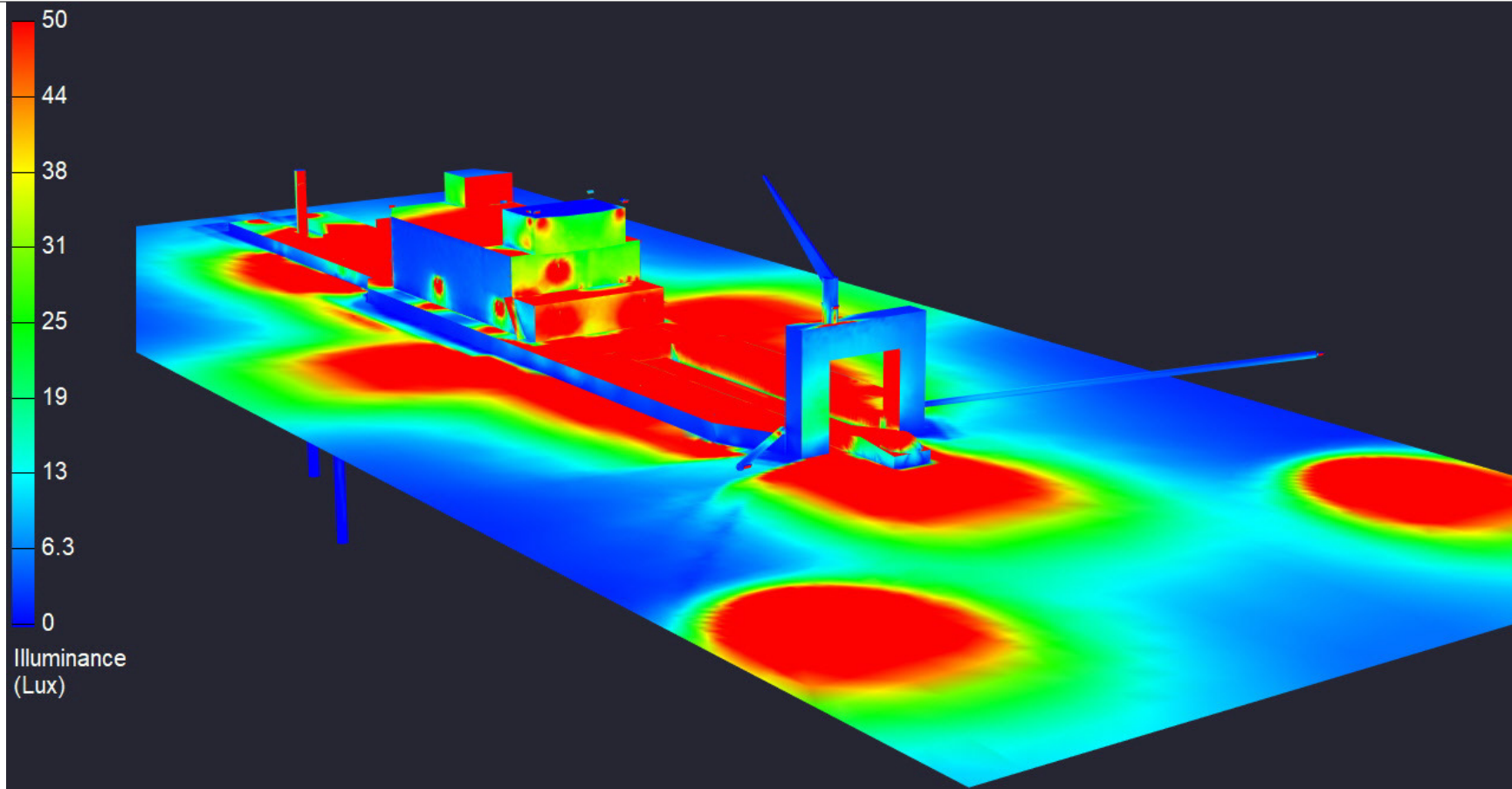
Ship Layout - Industrielicht
David Mackey
Lighting Application Specialist
(414) 973-3337
dmackey@phoenixlighting.com

Phoenix Products LLC.

The recipient agrees and confirms that they will use the information supplied by Phoenix Products company, Inc. to prepare lighting layouts and/or evaluate lighting for recommendation or specification, and while they may share layouts with clients, they will not otherwise distribute or share outside of the company the files or information contained therein.

Illumination results shown on this lighting design are based on project parameters provided to Phoenix Products used in conjunction with luminaire test procedures conducted under laboratory conditions. Actual project conditions differing from these design parameters may affect field results. The customer is responsible for verifying compliance with any applicable electrical, lighting, or energy code.

PHOENIX[®]
DURABILITY X DESIGN™
A division of The Phoenix Company™



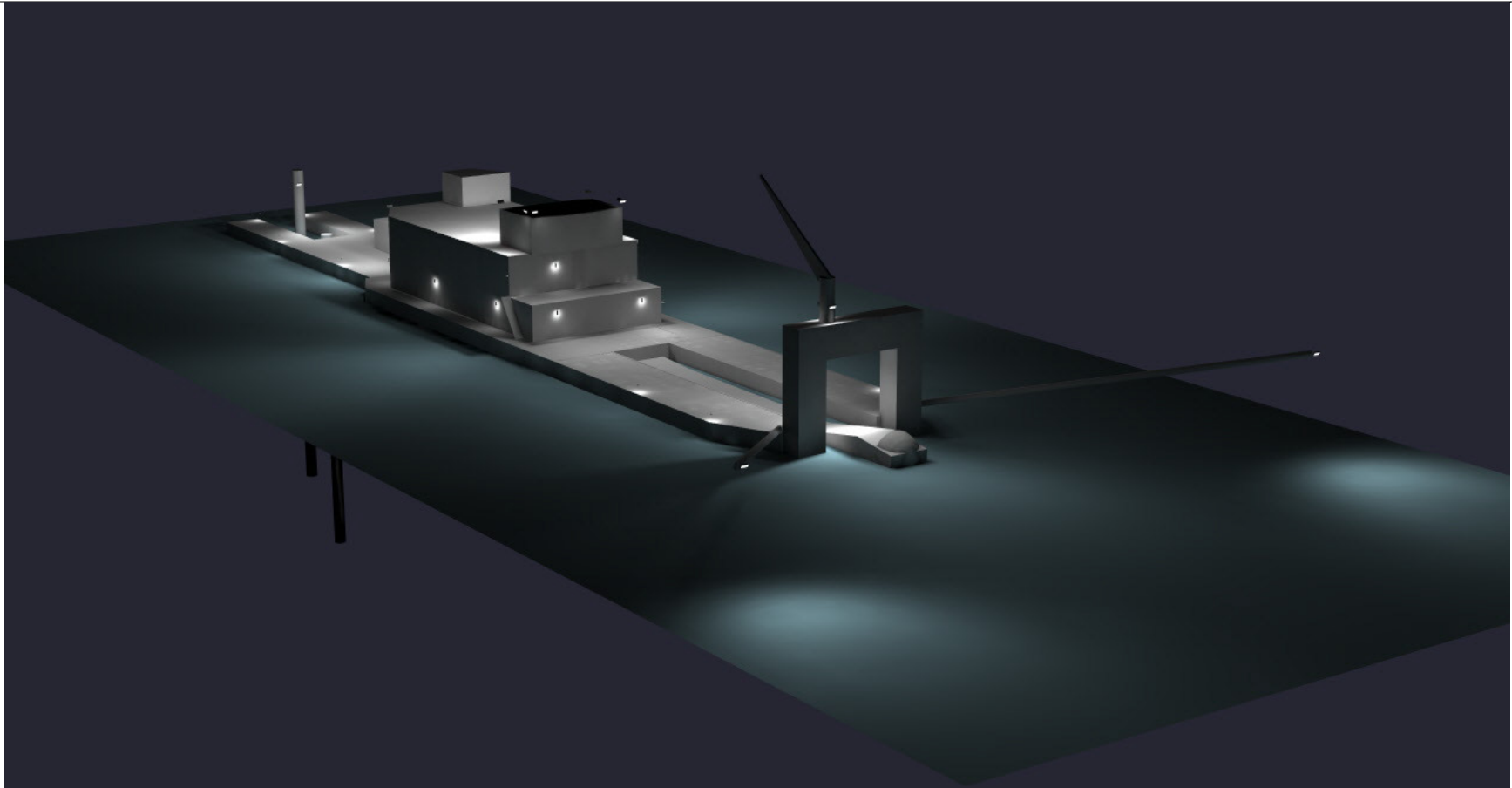
Ship Layout - Industrielicht
David Mackey
Lighting Application Specialist
(414) 973-3337
dmackey@phoenixlighting.com

Phoenix Products LLC.

The recipient agrees and confirms that they will use the information supplied by Phoenix Products company, Inc. to prepare lighting layouts and/or evaluate lighting for recommendation or specification, and while they may share layouts with clients, they will not otherwise distribute or share outside of the company the files or information contained therein.

Illumination results shown on this lighting design are based on project parameters provided to Phoenix Products used in conjunction with luminaire test procedures conducted under laboratory conditions. Actual project conditions differing from these design parameters may affect field results. The customer is responsible for verifying compliance with any applicable electrical, lighting, or energy code.

PHOENIX[®]
DURABILITY X DESIGN™
A division of The Phoenix Company™



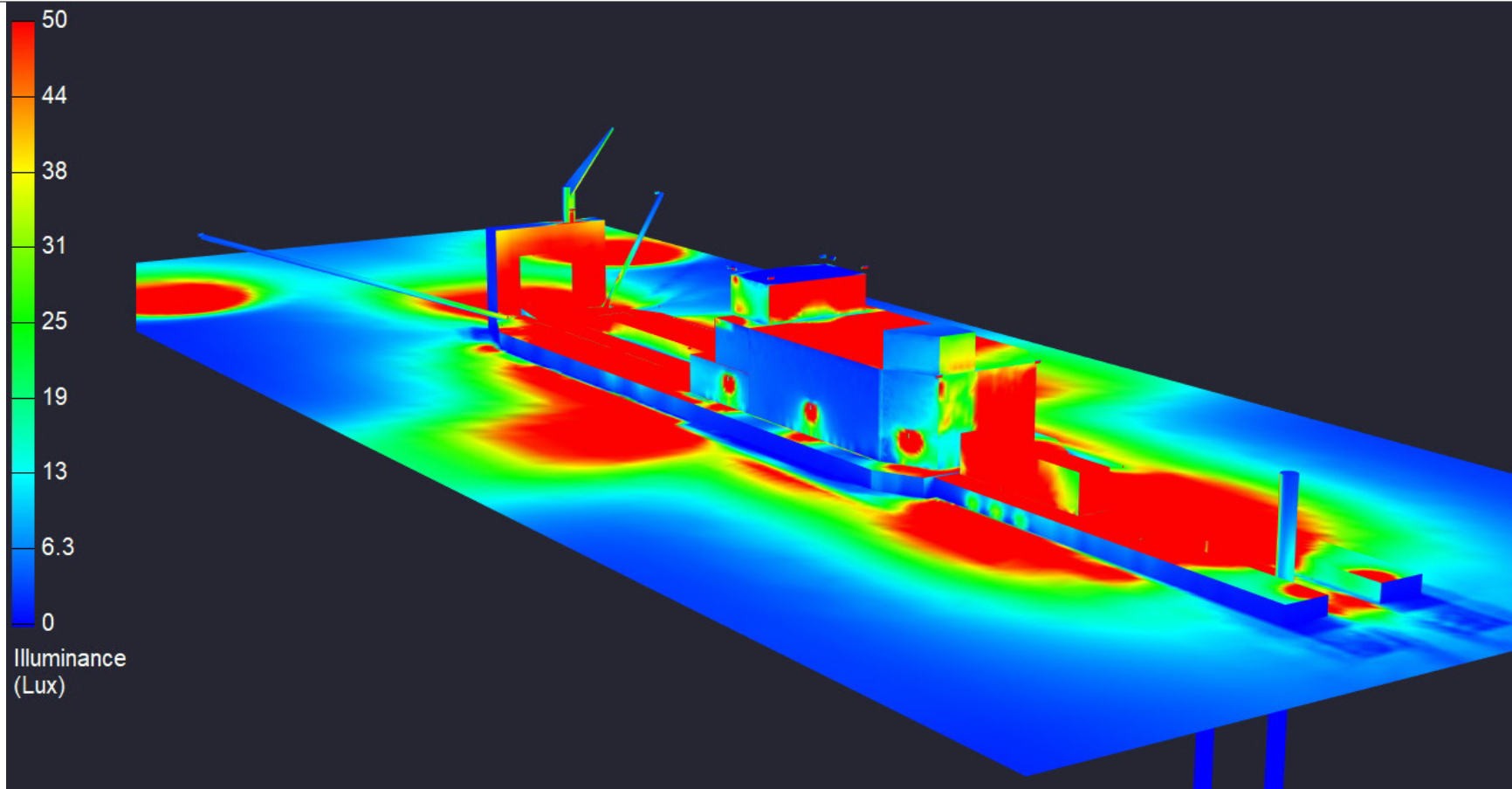
Ship Layout - Industrielicht
David Mackey
Lighting Application Specialist
(414) 973-3337
dmackey@phoenixlighting.com

Phoenix Products LLC.

The recipient agrees and confirms that they will use the information supplied by Phoenix Products company, Inc. to prepare lighting layouts and/or evaluate lighting for recommendation or specification, and while they may share layouts with clients, they will not otherwise distribute or share outside of the company the files or information contained therein.

Illumination results shown on this lighting design are based on project parameters provided to Phoenix Products used in conjunction with luminaire test procedures conducted under laboratory conditions. Actual project conditions differing from these design parameters may affect field results. The customer is responsible for verifying compliance with any applicable electrical, lighting, or energy code.

PHOENIX[®]
DURABILITY X DESIGN™
A division of The Phoenix Company™



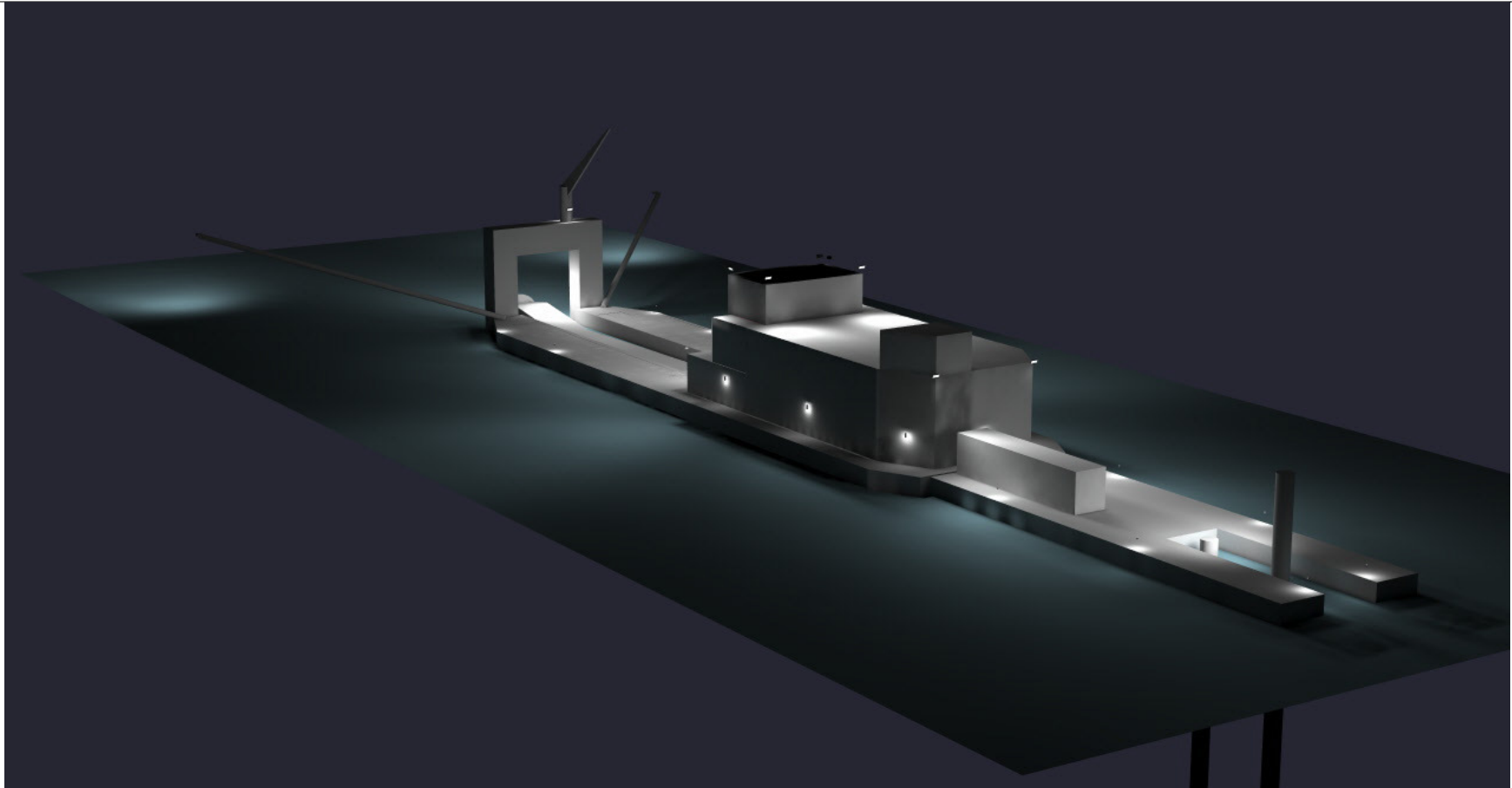
Ship Layout - Industrielicht
David Mackey
Lighting Application Specialist
(414) 973-3337
dmackey@phoenixlighting.com

Phoenix Products LLC.

The recipient agrees and confirms that they will use the information supplied by Phoenix Products company, Inc. to prepare lighting layouts and/or evaluate lighting for recommendation or specification, and while they may share layouts with clients, they will not otherwise distribute or share outside of the company the files or information contained therein.

Illumination results shown on this lighting design are based on project parameters provided to Phoenix Products used in conjunction with luminaire test procedures conducted under laboratory conditions. Actual project conditions differing from these design parameters may affect field results. The customer is responsible for verifying compliance with any applicable electrical, lighting, or energy code.

PHOENIX[®]
DURABILITY X DESIGN™
A division of The Phoenix Company™



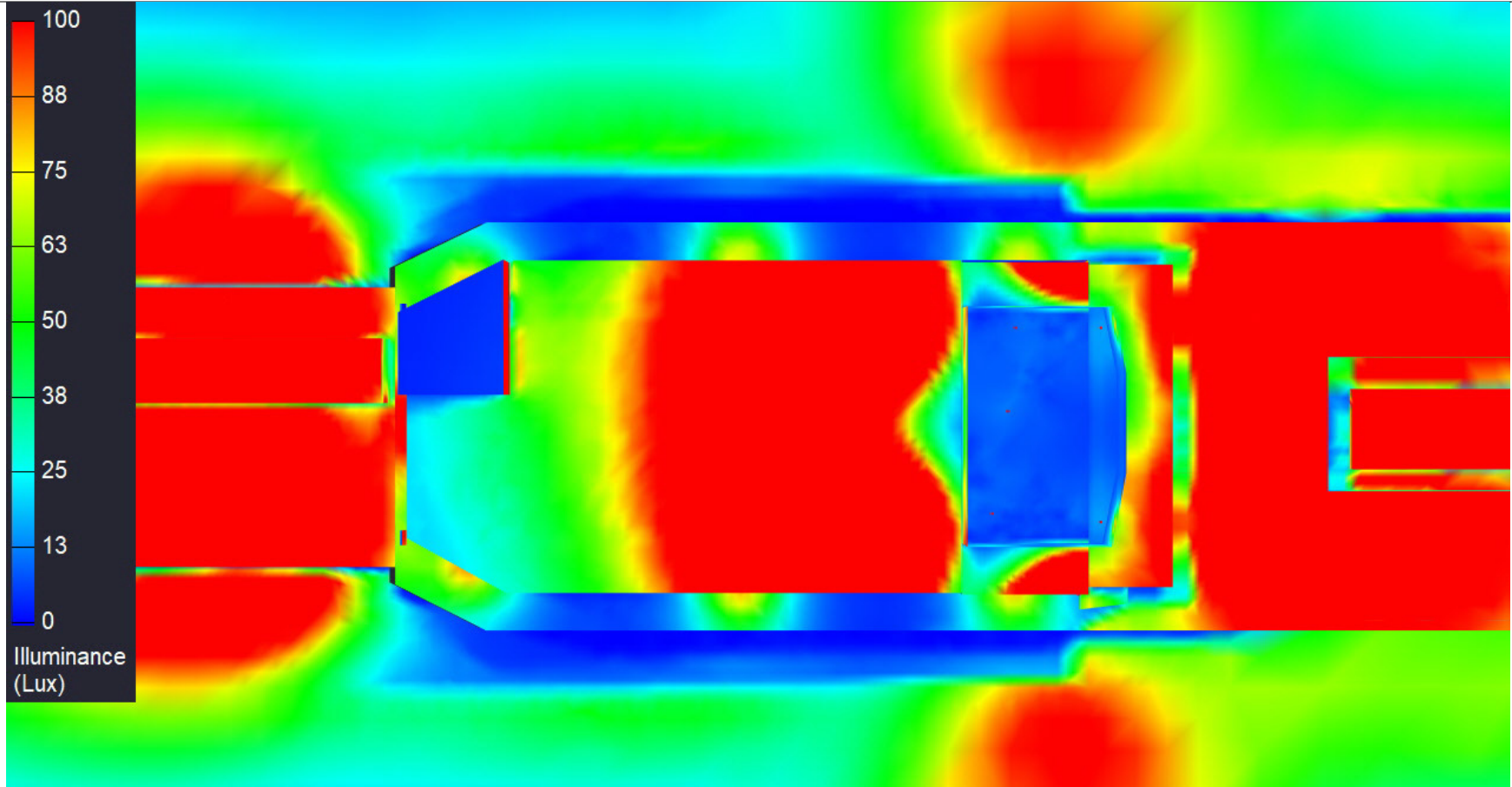
Ship Layout - Industrielicht
David Mackey
Lighting Application Specialist
(414) 973-3337
dmackey@phoenixlighting.com

Phoenix Products LLC.

The recipient agrees and confirms that they will use the information supplied by Phoenix Products company, Inc. to prepare lighting layouts and/or evaluate lighting for recommendation or specification, and while they may share layouts with clients, they will not otherwise distribute or share outside of the company the files or information contained therein.

Illumination results shown on this lighting design are based on project parameters provided to Phoenix Products used in conjunction with luminaire test procedures conducted under laboratory conditions. Actual project conditions differing from these design parameters may affect field results. The customer is responsible for verifying compliance with any applicable electrical, lighting, or energy code.

PHOENIX[®]
DURABILITY X DESIGN™
A division of The Phoenix Company™



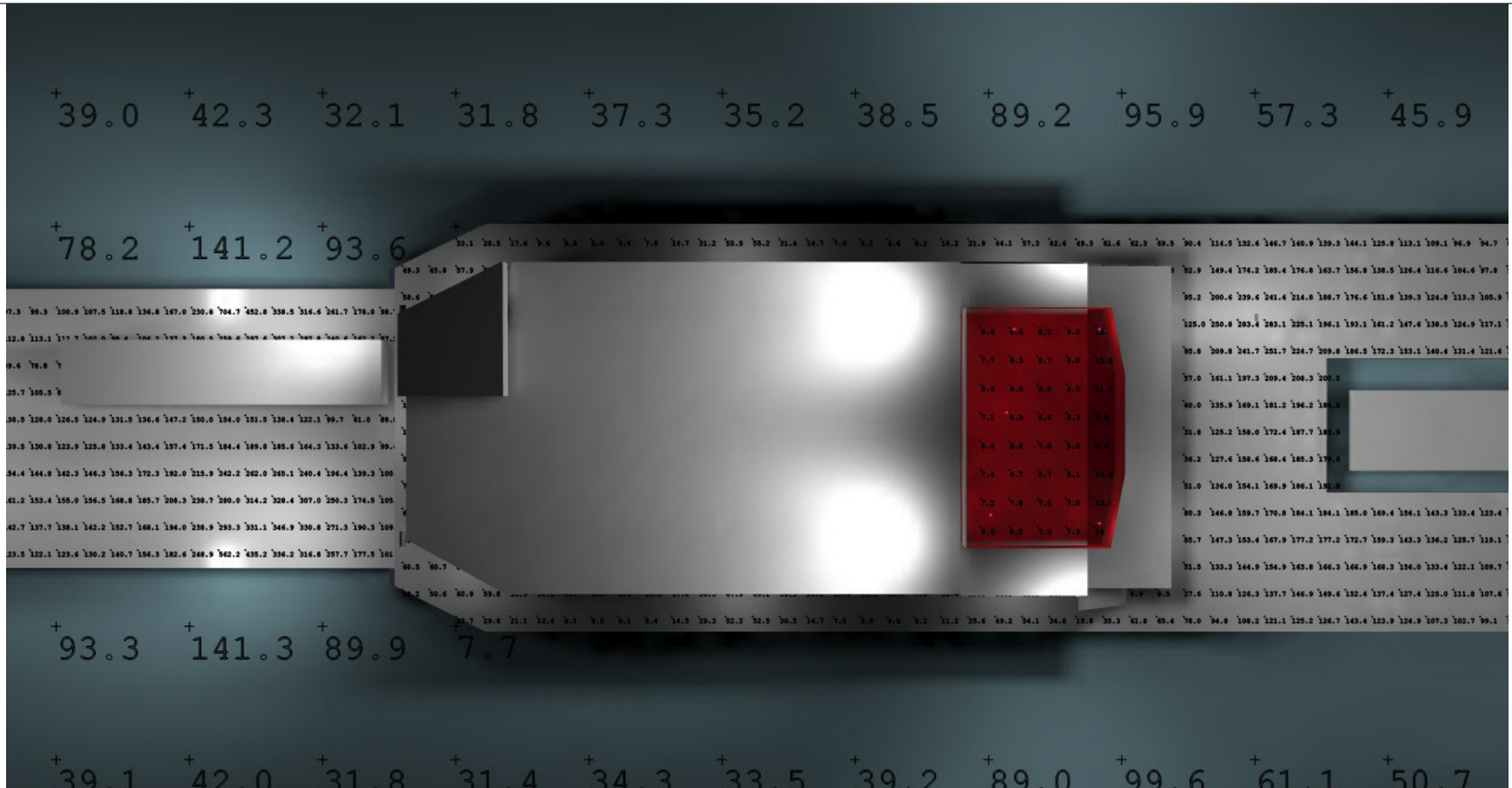
Ship Layout - Industrielicht
David Mackey
Lighting Application Specialist
(414) 973-3337
dmackey@phoenixlighting.com

Phoenix Products LLC.

The recipient agrees and confirms that they will use the information supplied by Phoenix Products company, Inc. to prepare lighting layouts and/or evaluate lighting for recommendation or specification, and while they may share layouts with clients, they will not otherwise distribute or share outside of the company the files or information contained therein.

Illumination results shown on this lighting design are based on project parameters provided to Phoenix Products used in conjunction with luminaire test procedures conducted under laboratory conditions. Actual project conditions differing from these design parameters may affect field results. The customer is responsible for verifying compliance with any applicable electrical, lighting, or energy code.

PHOENIX[®]
DURABILITY X DESIGN™
A division of The Phoenix Company™



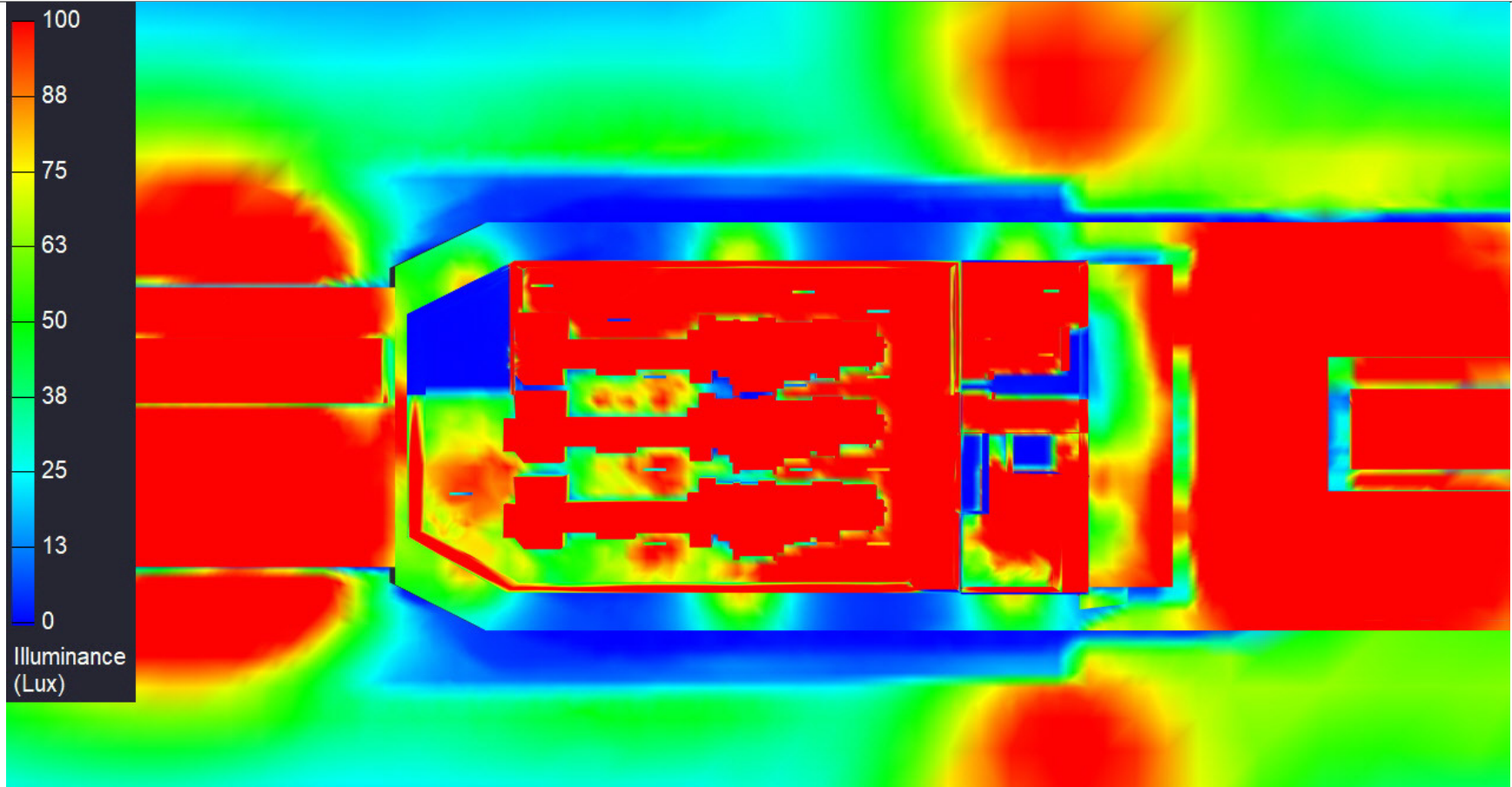
Ship Layout - Industrielicht
 David Mackey
 Lighting Application Specialist
 (414) 973-3337
 dmackey@phoenixlighting.com

Phoenix Products LLC.

The recipient agrees and confirms that they will use the information supplied by Phoenix Products company, Inc. to prepare lighting layouts and/or evaluate lighting for recommendation or specification, and while they may share layouts with clients, they will not otherwise distribute or share outside of the company the files or information contained therein.

Illumination results shown on this lighting design are based on project parameters provided to Phoenix Products used in conjunction with luminaire test procedures conducted under laboratory conditions. Actual project conditions differing from these design parameters may affect field results. The customer is responsible for verifying compliance with any applicable electrical, lighting, or energy code.

PHOENIX[®]
 DURABILITY X DESIGN™
 A division of The Phoenix Company™



Ship Layout - Industrielicht
David Mackey
Lighting Application Specialist
(414) 973-3337
dmackey@phoenixlighting.com

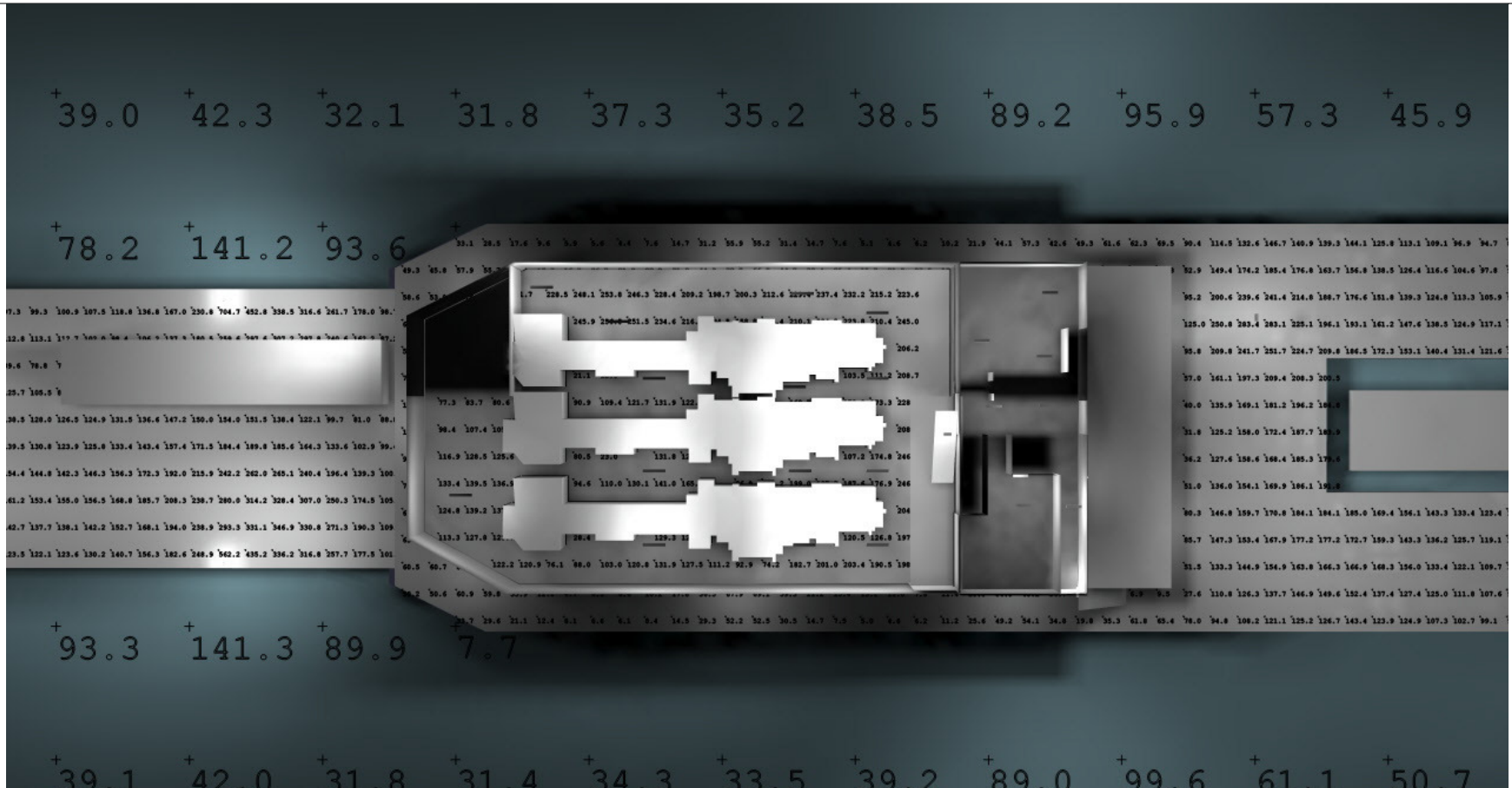
Phoenix Products LLC.

The recipient agrees and confirms that they will use the information supplied by Phoenix Products company, Inc. to prepare lighting layouts and/or evaluate lighting for recommendation or specification, and while they may share layouts with clients, they will not otherwise distribute or share outside of the company the files or information contained therein.

Illumination results shown on this lighting design are based on project parameters provided to Phoenix Products used in conjunction with luminaire test procedures conducted under laboratory conditions. Actual project conditions differing from these design parameters may affect field results. The customer is responsible for verifying compliance with any applicable electrical, lighting, or energy code.

PHOENIX[®]
DURABILITY X DESIGN™

A division of The Phoenix Company™



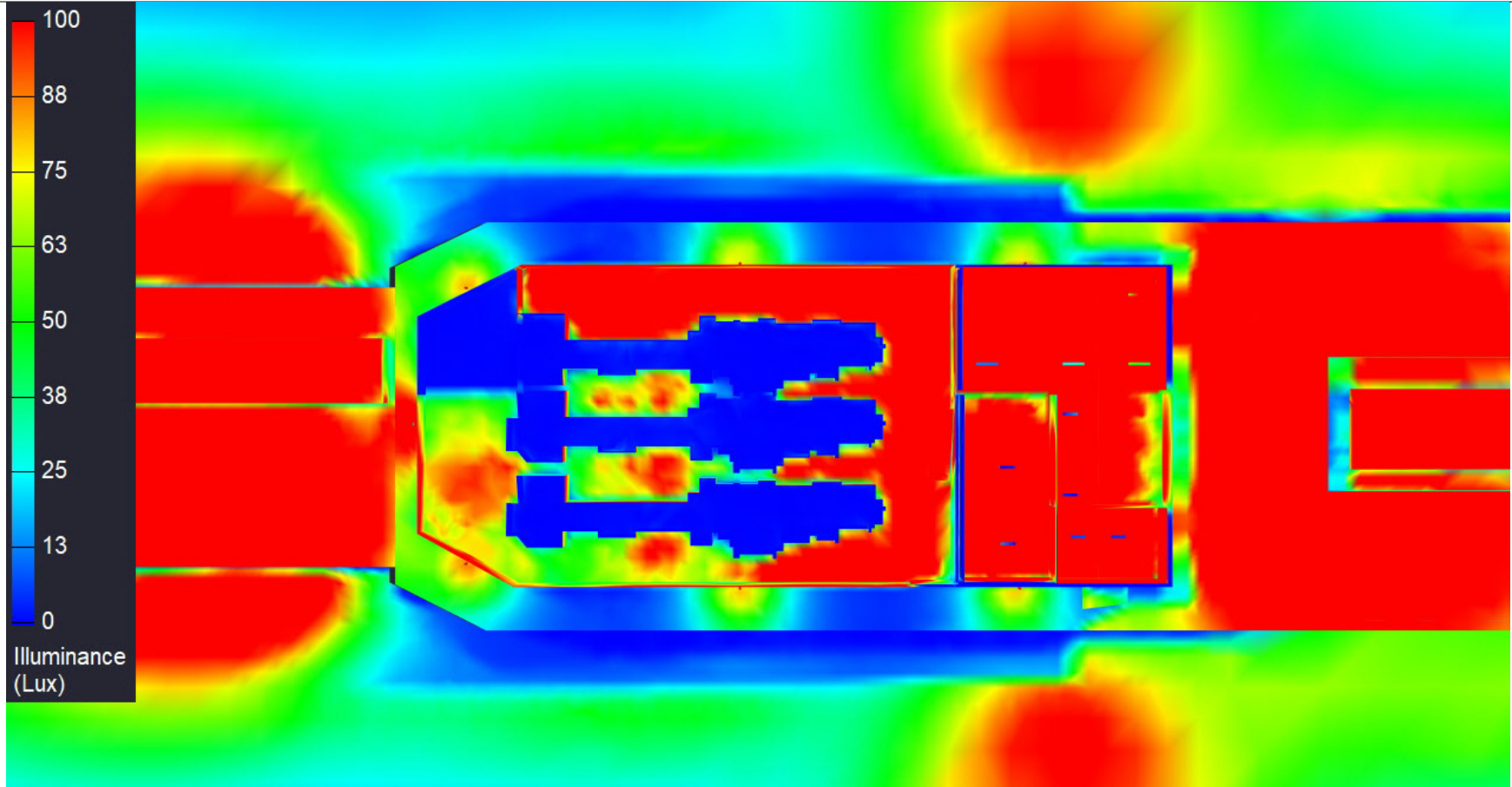
Ship Layout - Industrielicht
 David Mackey
 Lighting Application Specialist
 (414) 973-3337
 dmackey@phoenixlighting.com

Phoenix Products LLC.

The recipient agrees and confirms that they will use the information supplied by Phoenix Products company, Inc. to prepare lighting layouts and/or evaluate lighting for recommendation or specification, and while they may share layouts with clients, they will not otherwise distribute or share outside of the company the files or information contained therein.

Illumination results shown on this lighting design are based on project parameters provided to Phoenix Products used in conjunction with luminaire test procedures conducted under laboratory conditions. Actual project conditions differing from these design parameters may affect field results. The customer is responsible for verifying compliance with any applicable electrical, lighting, or energy code.





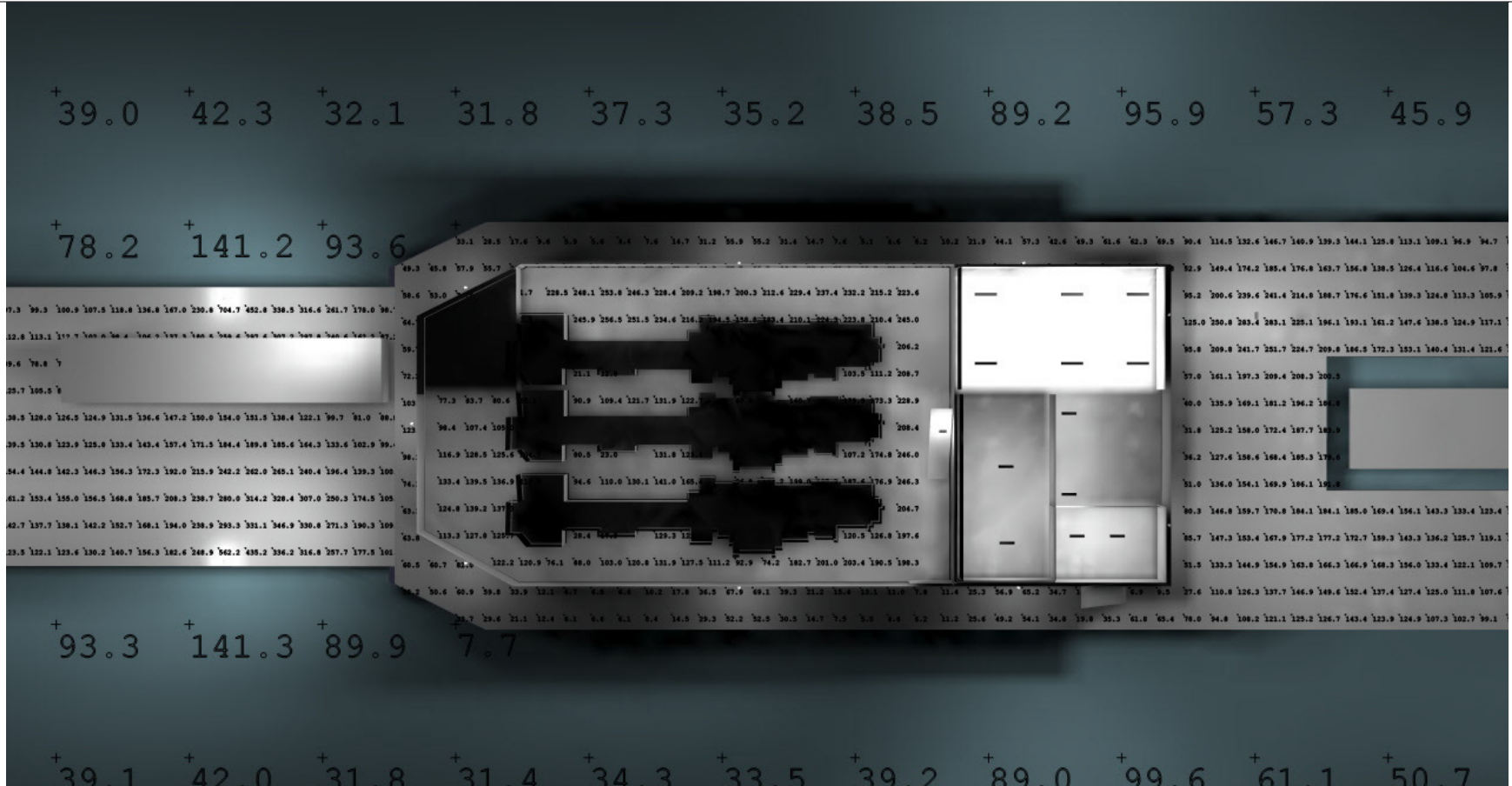
Ship Layout - Industrielicht
 David Mackey
 Lighting Application Specialist
 (414) 973-3337
 dmackey@phoenixlighting.com

Phoenix Products LLC.

The recipient agrees and confirms that they will use the information supplied by Phoenix Products company, Inc. to prepare lighting layouts and/or evaluate lighting for recommendation or specification, and while they may share layouts with clients, they will not otherwise distribute or share outside of the company the files or information contained therein.

Illumination results shown on this lighting design are based on project parameters provided to Phoenix Products used in conjunction with luminaire test procedures conducted under laboratory conditions. Actual project conditions differing from these design parameters may affect field results. The customer is responsible for verifying compliance with any applicable electrical, lighting, or energy code.

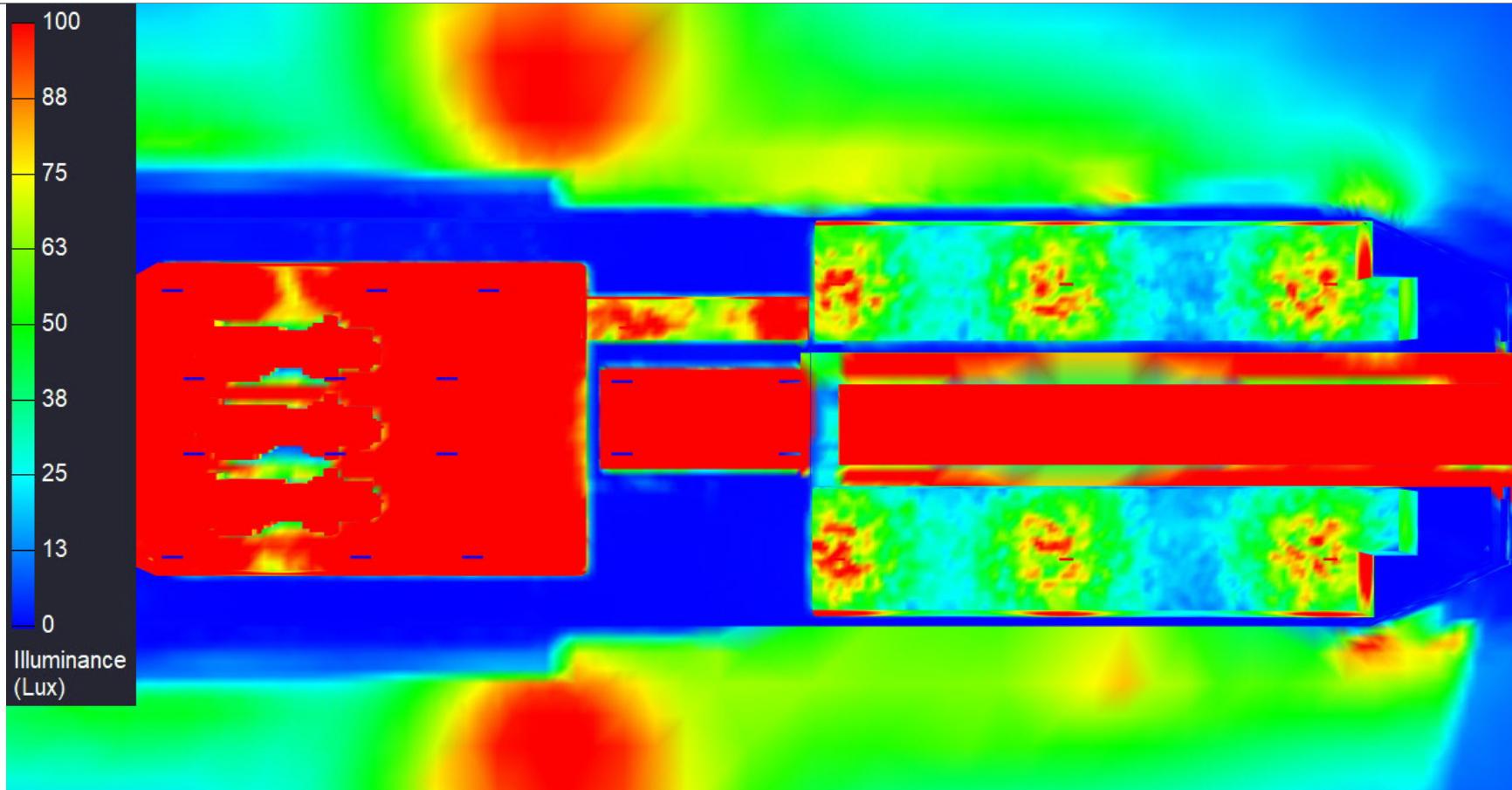
PHOENIX[®]
 DURABILITY X DESIGN™
 A division of The Phoenix Company™



Ship Layout - Industrielicht
 David Mackey
 Lighting Application Specialist
 (414) 973-3337
 dmackey@phoenixlighting.com

Phoenix Products LLC.
The recipient agrees and confirms that they will use the information supplied by Phoenix Products company, Inc. to prepare lighting layouts and/or evaluate lighting for recommendation or specification, and while they may share layouts with clients, they will not otherwise distribute or share outside of the company the files or information contained therein.
Illumination results shown on this lighting design are based on project parameters provided to Phoenix Products used in conjunction with luminaire test procedures conducted under laboratory conditions. Actual project conditions differing from these design parameters may affect field results. The customer is responsible for verifying compliance with any applicable electrical, lighting, or energy code.





Ship Layout - Industrielicht
 David Mackey
 Lighting Application Specialist
 (414) 973-3337
 dmackey@phoenixlighting.com

Phoenix Products LLC.

The recipient agrees and confirms that they will use the information supplied by Phoenix Products company, Inc. to prepare lighting layouts and/or evaluate lighting for recommendation or specification, and while they may share layouts with clients, they will not otherwise distribute or share outside of the company the files or information contained therein.

Illumination results shown on this lighting design are based on project parameters provided to Phoenix Products used in conjunction with luminaire test procedures conducted under laboratory conditions. Actual project conditions differing from these design parameters may affect field results. The customer is responsible for verifying compliance with any applicable electrical, lighting, or energy code.

PHOENIX[®]
 DURABILITY X DESIGN™
 A division of The Phoenix Company™

8 +37.3 +35.2 +38.5 +89.2 +95.9 +57.3 +45.9 +41.1 +32.8 +23.5 +16.5



4 +34.3 +33.5 +39.2 +89.0 +99.6 +61.1 +50.7 +51.1 +46.3 +37.1 +32.7

Ship Layout - Industrielicht
 David Mackey
 Lighting Application Specialist
 (414) 973-3337
 dmackey@phoenixlighting.com

Phoenix Products LLC.
The recipient agrees and confirms that they will use the information supplied by Phoenix Products company, Inc. to prepare lighting layouts and/or evaluate lighting for recommendation or specification, and while they may share layouts with clients, they will not otherwise distribute or share outside of the company the files or information contained therein.
Illumination results shown on this lighting design are based on project parameters provided to Phoenix Products used in conjunction with luminaire test procedures conducted under laboratory conditions. Actual project conditions differing from these design parameters may affect field results. The customer is responsible for verifying compliance with any applicable electrical, lighting, or energy code.

